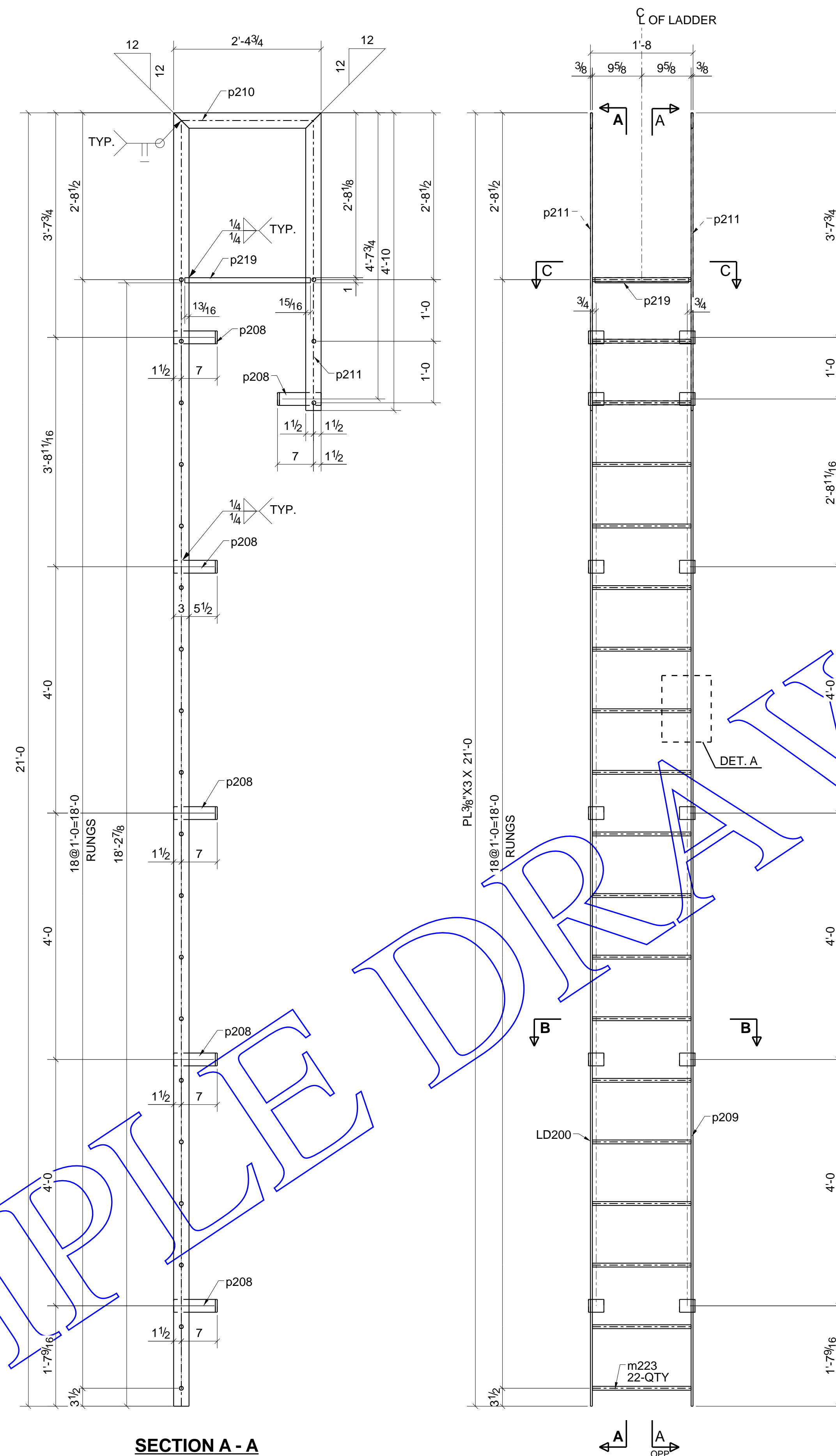


BILL OF MATERIAL

MARK	QTY	DESCRIPTION	GRADE	LENGTH	WEIGHT	REMARKS
LD200	1	LADDER				
LD200	1	PL3/8"x3"	A36	21'-0"	80	
m223	22	RB3/4"	A36	1'-7 1/4"	48	
p208	12	PL3/8"x2 1/2"	A36	0'-10 3/4"	35	
p209	1	PL3/8"x3"	A36	21'-0"	80	
p210	2	PL3/8"x3"	A36	2'-4 3/4"	16	
p211	2	PL3/8"x3"	A36	4'-10"	36	
p219	1	GRT1"x18 1/4"	A36	2'-0 1/2"	127	
TOTAL WEIGHT THIS DRAWING					422	



SECTION A - A

SECTION B - B

SECTION C - C

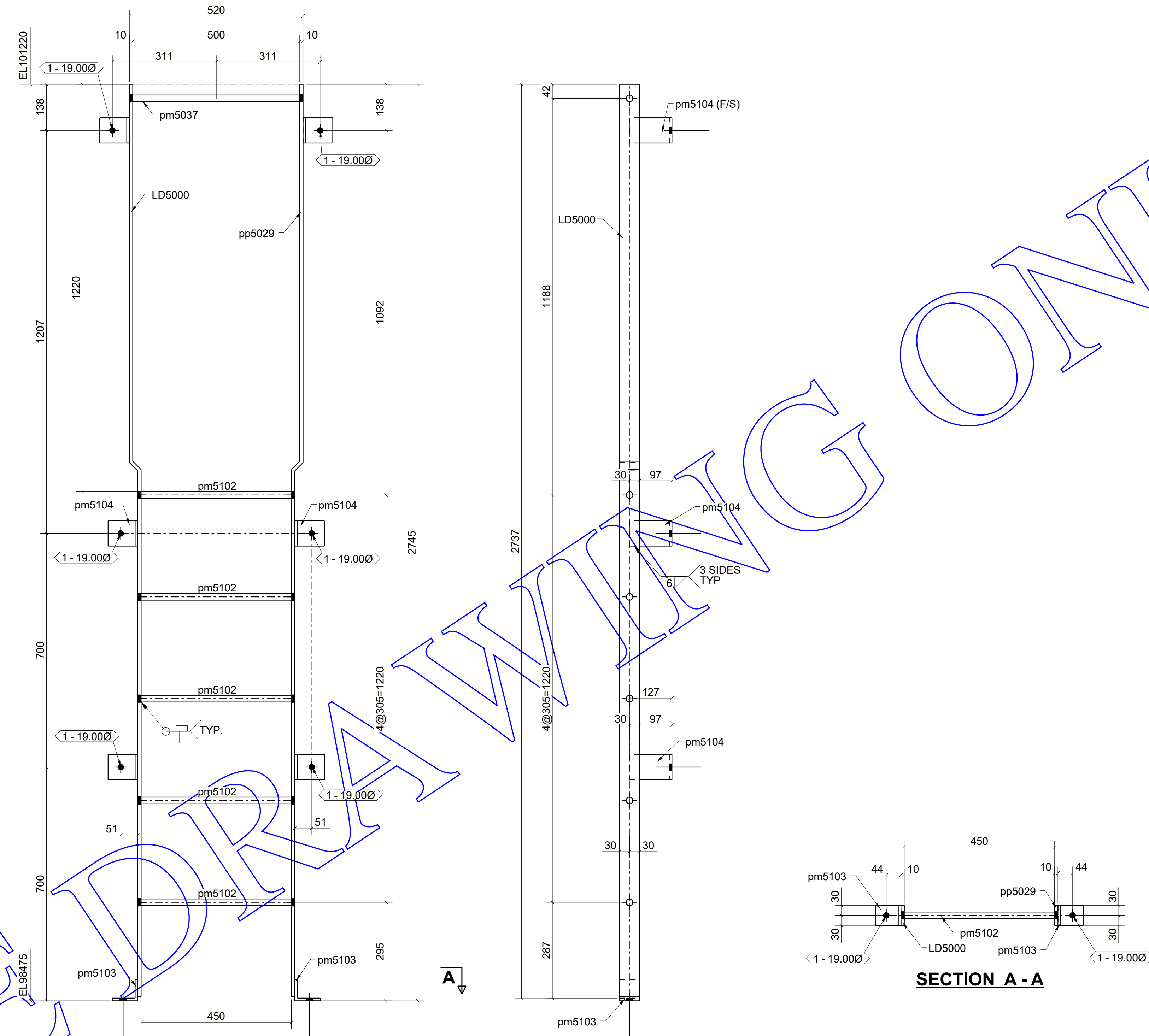
SECTION B - B

ONE - LADDER - LD200

SAMPLE DRAWING ONLY

HOLE SIZE	13/16@ U.N.O.			
SHOP PAINT	RED PRIMER			
PRINT RECORD	SCALE:	JOB NUMBER:	PO NUMBER:	DRAWN BY: RSK
	DATE:	#1908		CHECKED BY: MAK
JOB DESCRIPTION:				DRAWING NUMBER: LD200
CUSTOMER:				
TITLE: LADDER				

GRID LOCATION:
 GRID REF: <H/<0



ONE - LADDER - LD5000

BILL OF MATERIAL

MARK	QTY	DESCRIPTION	LENGTH	WEIGHT	REMARKS
LD5000	1	LADDER			
LD5000	1	PL10X60	2735.00	28	300W
pm5037	1	ROD20	514.00	3	300W
pm5102	5	ROD20	464.00	11	300W
pm5103	2	L76X64X7.9	60.00	2	300W
pm5104	6	L127X89X7.9	76.00	13	300W
pp5029	1	PL10X60	2735.00	28	300W
TOTAL WEIGHT THIS DRAWING				86	

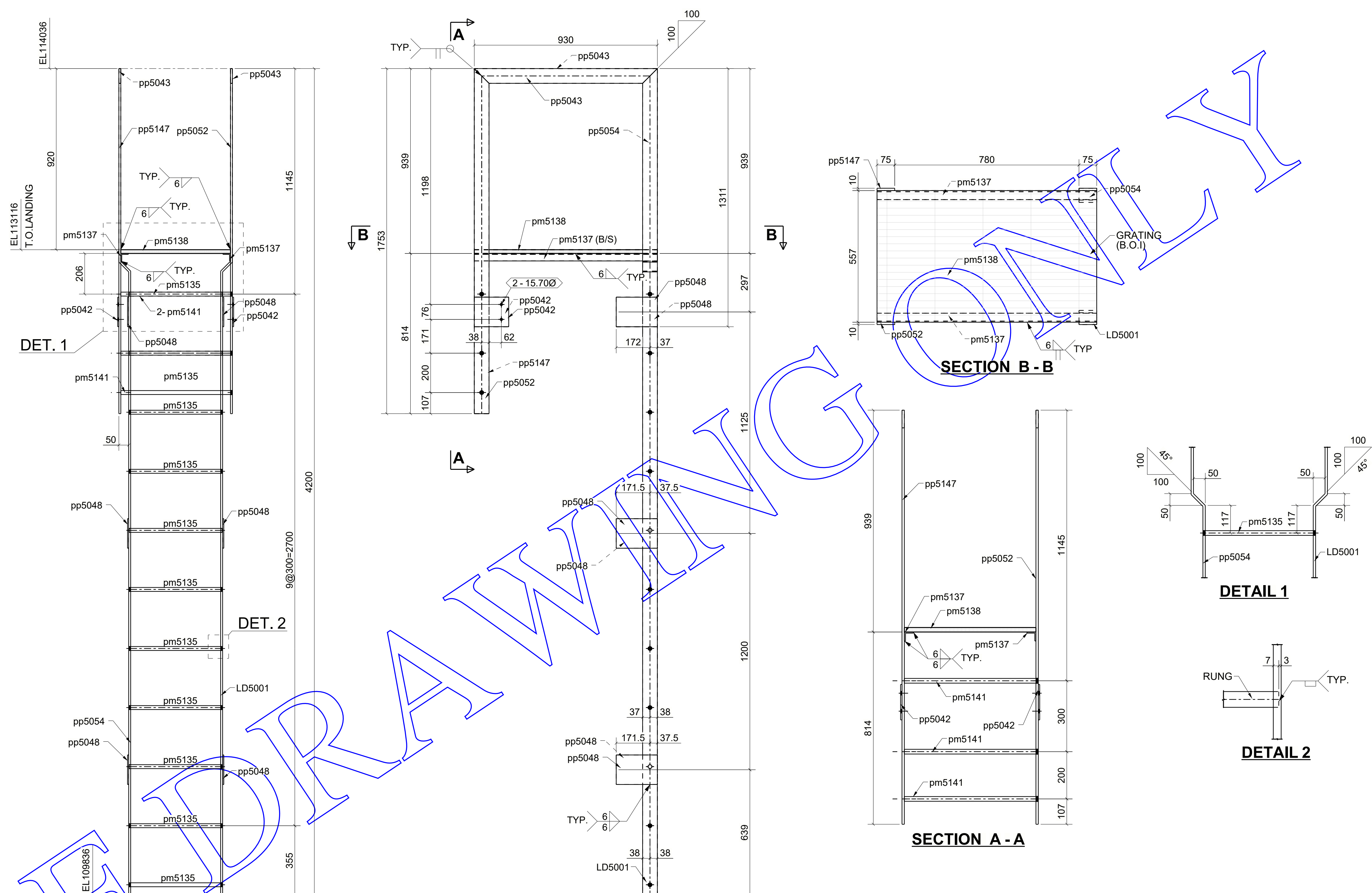
ASSEMBLY WEIGHT: **38lbs** ASSEMBLY AREA: **1.18m²** ASSEMBLY VOLUME: **0.00m³**

NOTE #1: ARCHITECT, ENGINEER & G.C. PLEASE NOTE:
 IF NO COMMENTS APPEAR ON THIS DRAWING WHEN THE DRAWING ISSUED FOR APPROVAL / REVIEW, THEN ECOSSE WELDING WILL ASSUME THAT ITS INTERPRETATION OF ARCHITECTURAL AND STRUCTURAL DRAWINGS IS ACCEPTABLE BY ALL PARTIES, AND FABRICATION WILL PROCEED ACCORDINGLY.
 REF:
 MATERIAL: CAN3-G40.20 & G40.21
 HOLES: 22mm Ø (U.N.O)
 WELDS: 6mm Fillet (U.N.O)
 SURF PREP: SSPC-SP2
 PRIMER NOTE: GALVANIZED
 PAINT NOTE:
 REMARKS:

PROJECT:			
CUSTOMER:			
DETAIL: LADDER			SHEET #:
DRAWN BY: RSH	CHECKED BY: MAK	JOB NUMBER: 7000	DWG NUMBER: LD5000
DATE:	PLOT DATE:		REV: 0

DRAWING ONLY

Taha Structures



BILL OF MATERIAL

MARK	QTY	DESCRIPTION	LENGTH	WEIGHT	REMARKS
LD5001	1	LADDER			
LD5001	1	PL10X75	4213.00	54	300W
pm5135	11	ROD20	471.00	25	300W
pm5137	2	L38X38X4.8	930.00	11	300W
pm5138	1	GRTG	0.00	0	BOI
pm5141	3	ROD20	564.00	8	300W
pp5042	2	PL6X150	175.00	5	300W
pp5043	2	PL10X75	930.00	22	300W
pp5048	6	PL6X150	209.00	20	300W
pp5052	1	PL10X75	1753.00	22	300W
pp5054	1	PL10X75	4213.00	54	300W
pp5147	1	PL10X75	1753.00	22	300W
TOTAL WEIGHT THIS DRAWING				245	

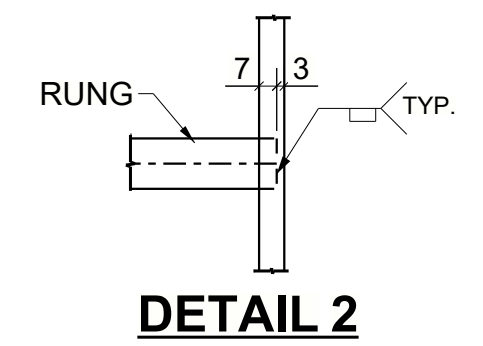
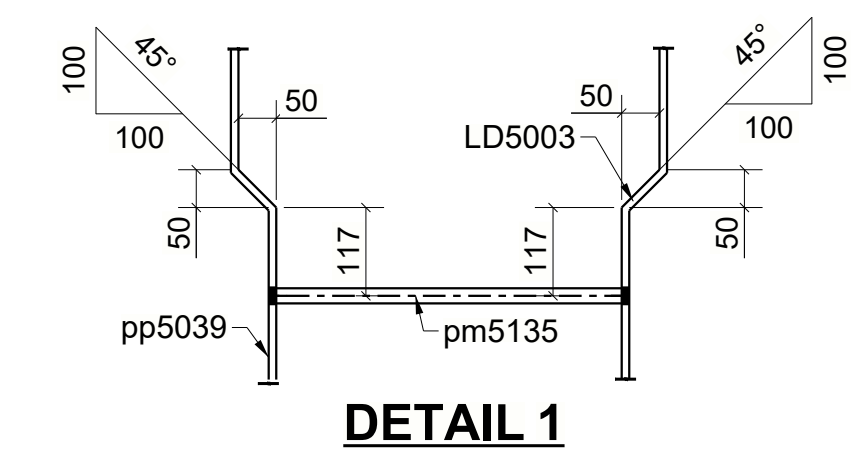
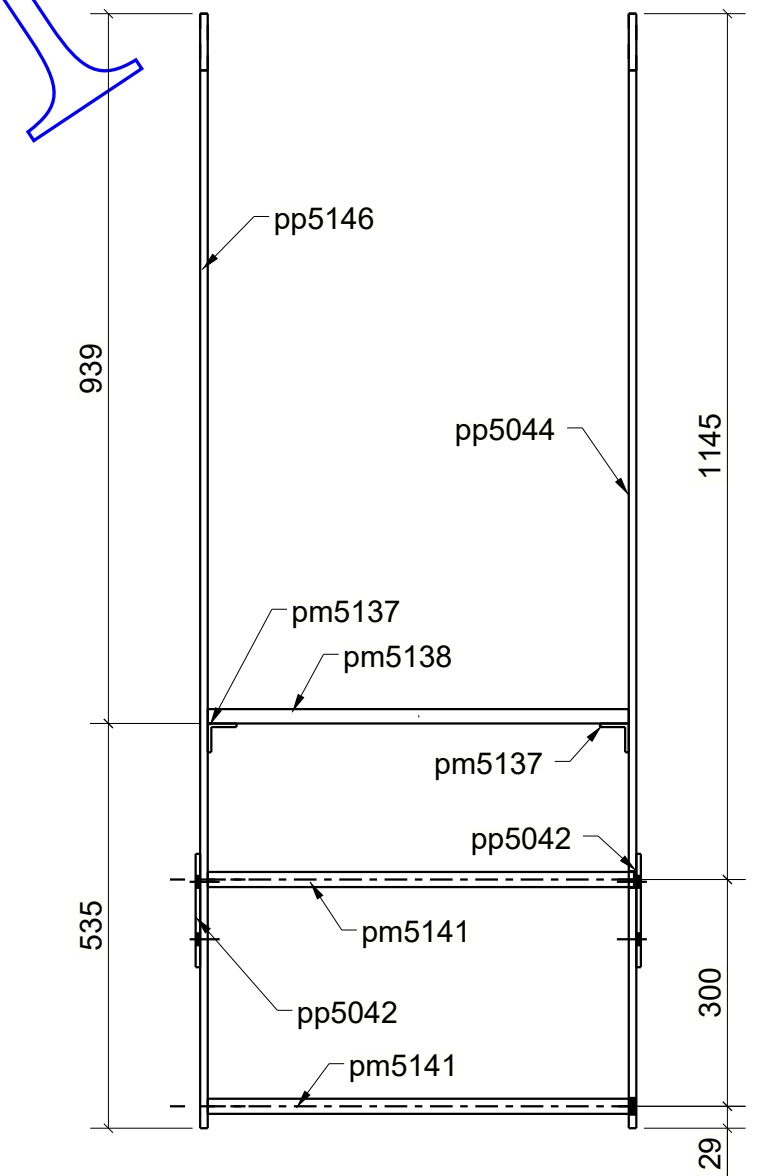
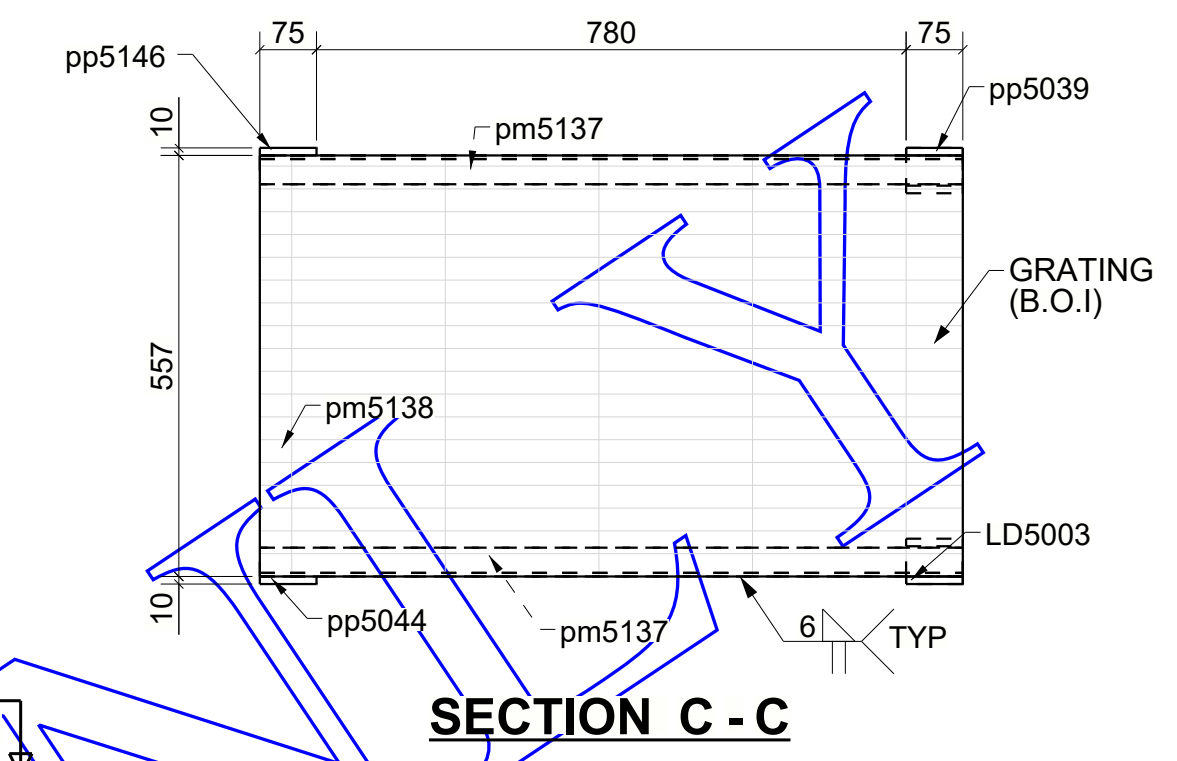
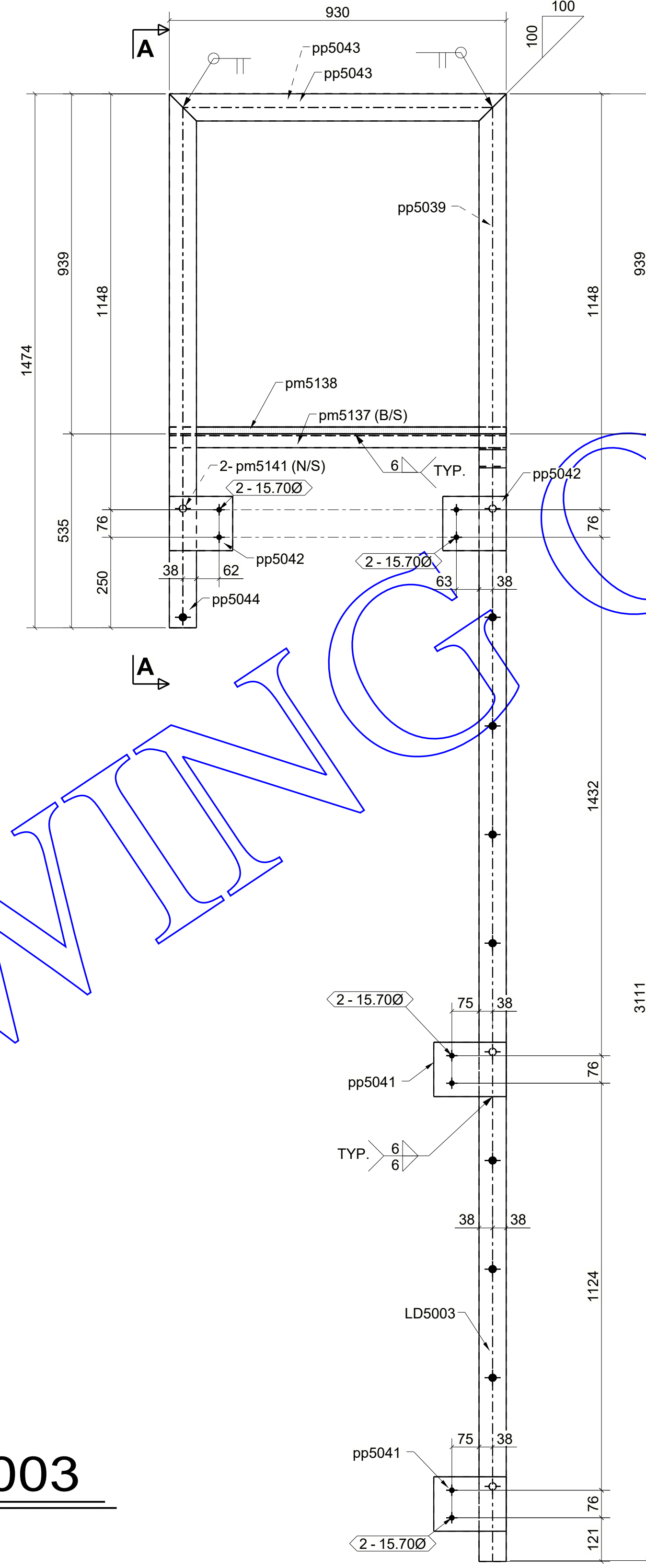
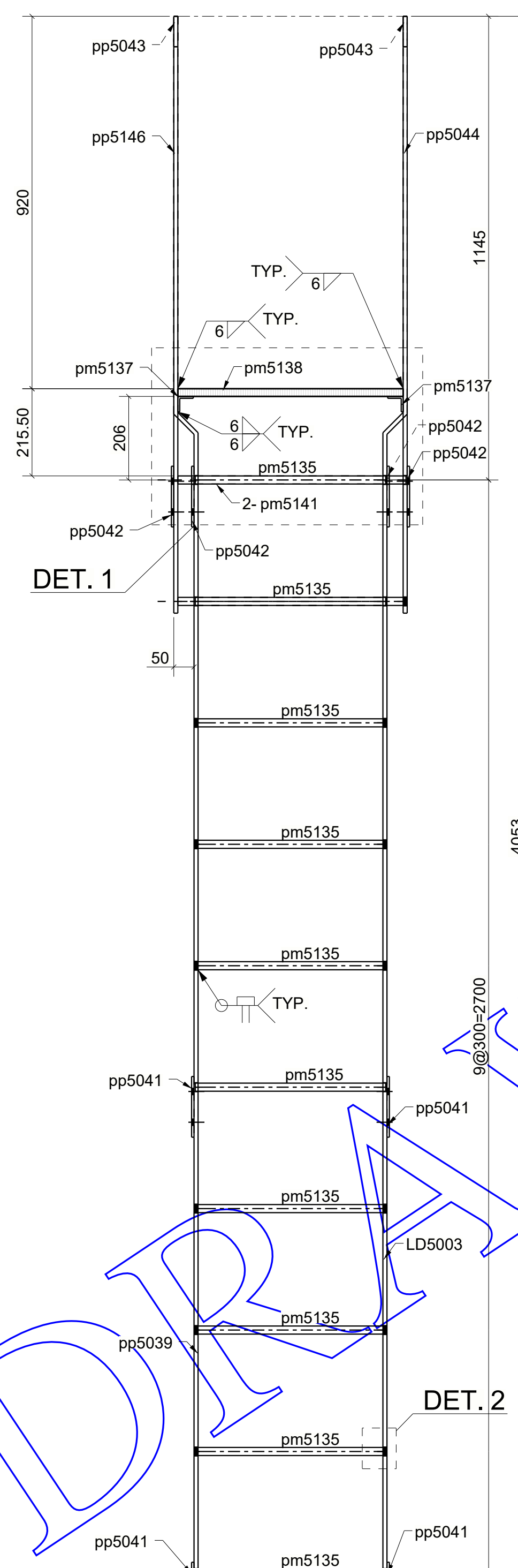
ONE - LADDER - LD5001

ASSEMBLY WEIGHT: 190lbs	ASSEMBLY AREA: 4.63m ²	ASSEMBLY VOLUME: 0.02m ³
----------------------------	--------------------------------------	--

NOTE #1: ARCHITECT, ENGINEER & G.C. PLEASE NOTE:
 IF NO COMMENTS APPEAR ON THIS DRAWING WHEN THE DRAWING IS ISSUED FOR APPROVAL / REVIEW, THEN ECOSSE WELDING WILL ASSUME THAT ITS INTERPRETATION OF ARCHITECTURAL AND STRUCTURAL DRAWINGS IS ACCEPTABLE BY ALL PARTIES, AND FABRICATION WILL PROCEED ACCORDINGLY.

REF:
 MATERIAL: CAN3-G40.20 & G40.21
 HOLES: 22mm Ø (U.N.O)
 WELDS: 6mm Fillet (U.N.O)
 SURF PREP: SSPC-SP2
 PRIMER NOTE: GALVANIZED
 PAINT NOTE:
 REMARKS:

PROJECT:		SHEET #:		REV: 0
CUSTOMER:		DWG NUMBER:		
DETAIL: LADDER		JOB NUMBER:		
DRAWN BY:	CHECKED BY:	DATE:	PLOT DATE:	
		7000	LD5001	



ONE - LADDER - LD5003

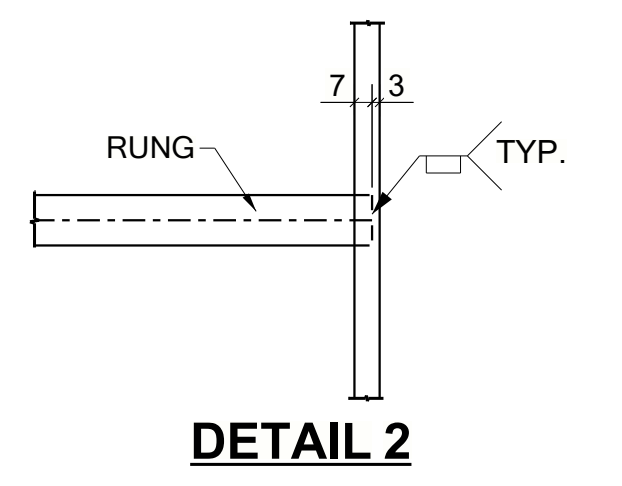
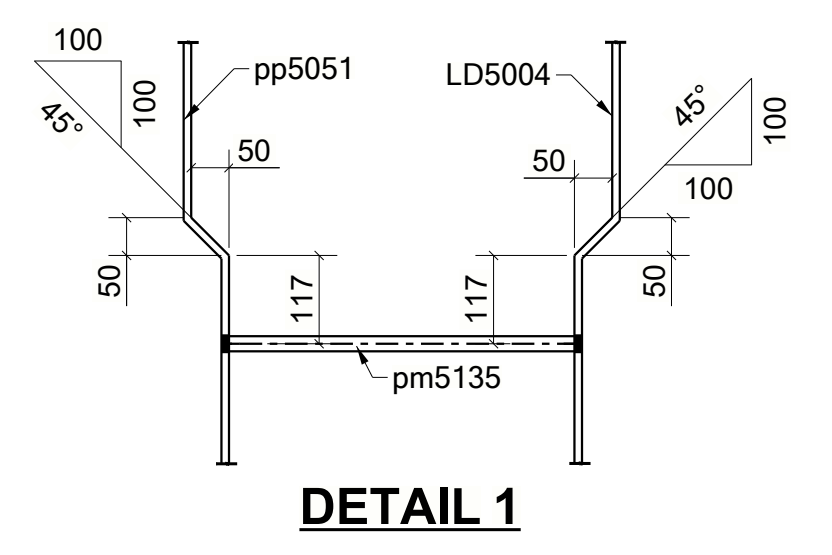
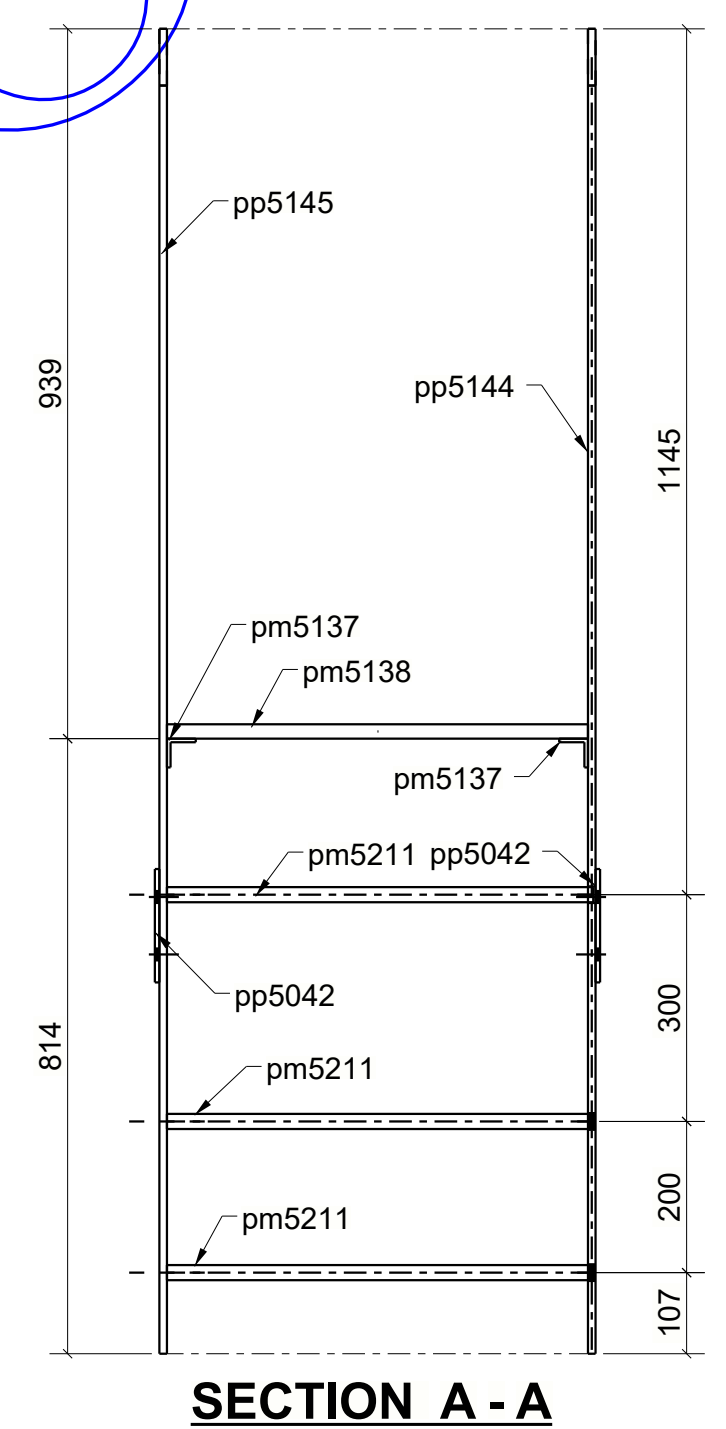
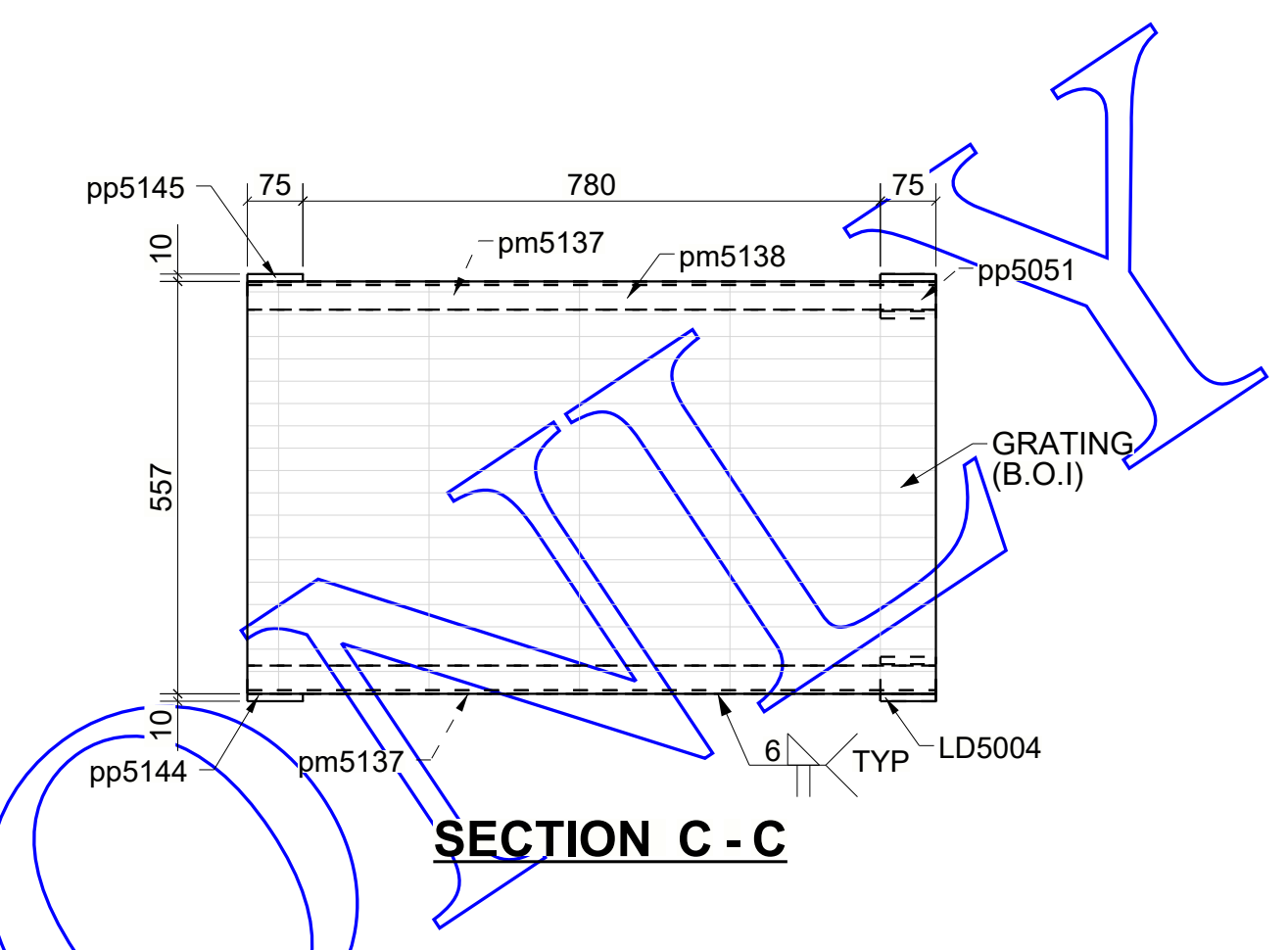
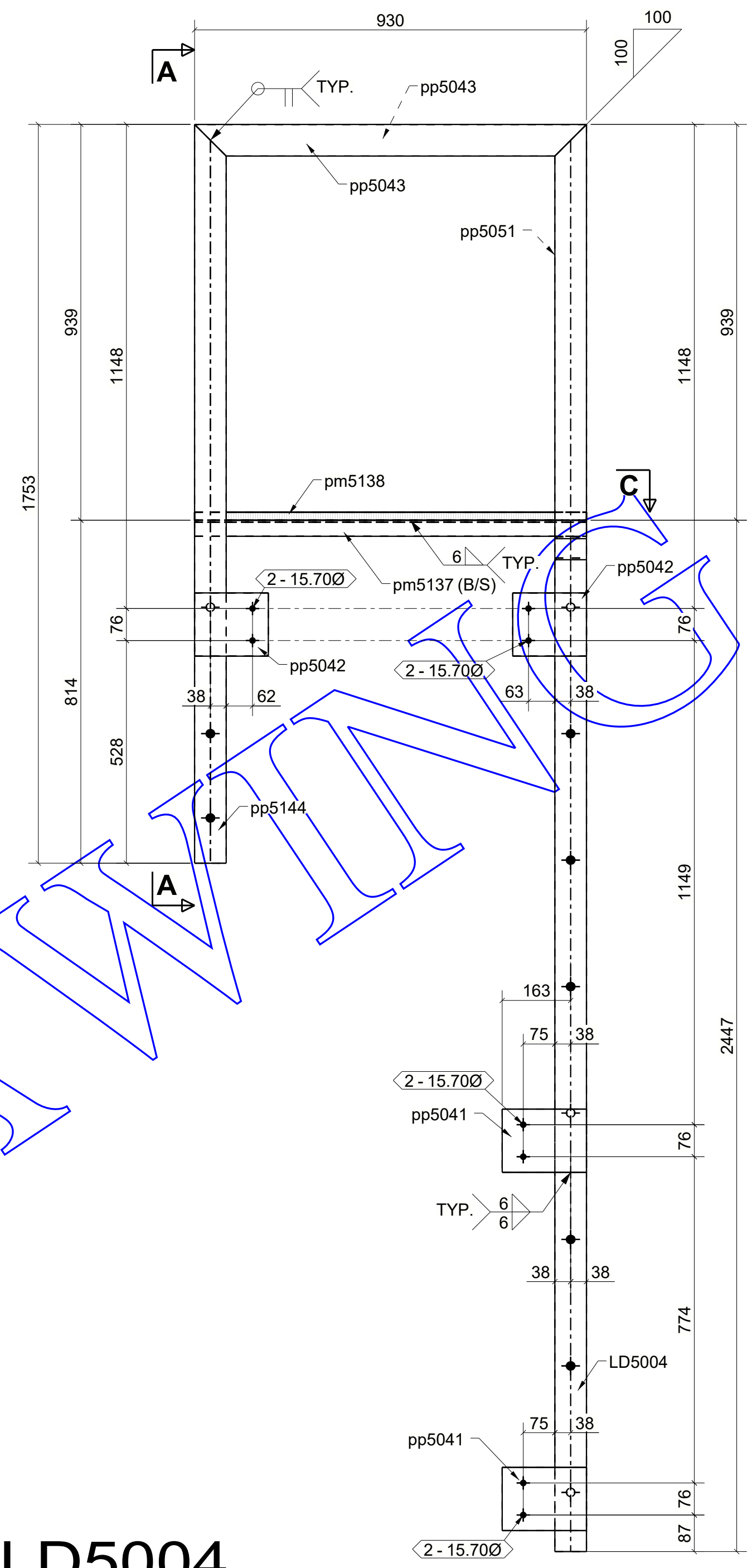
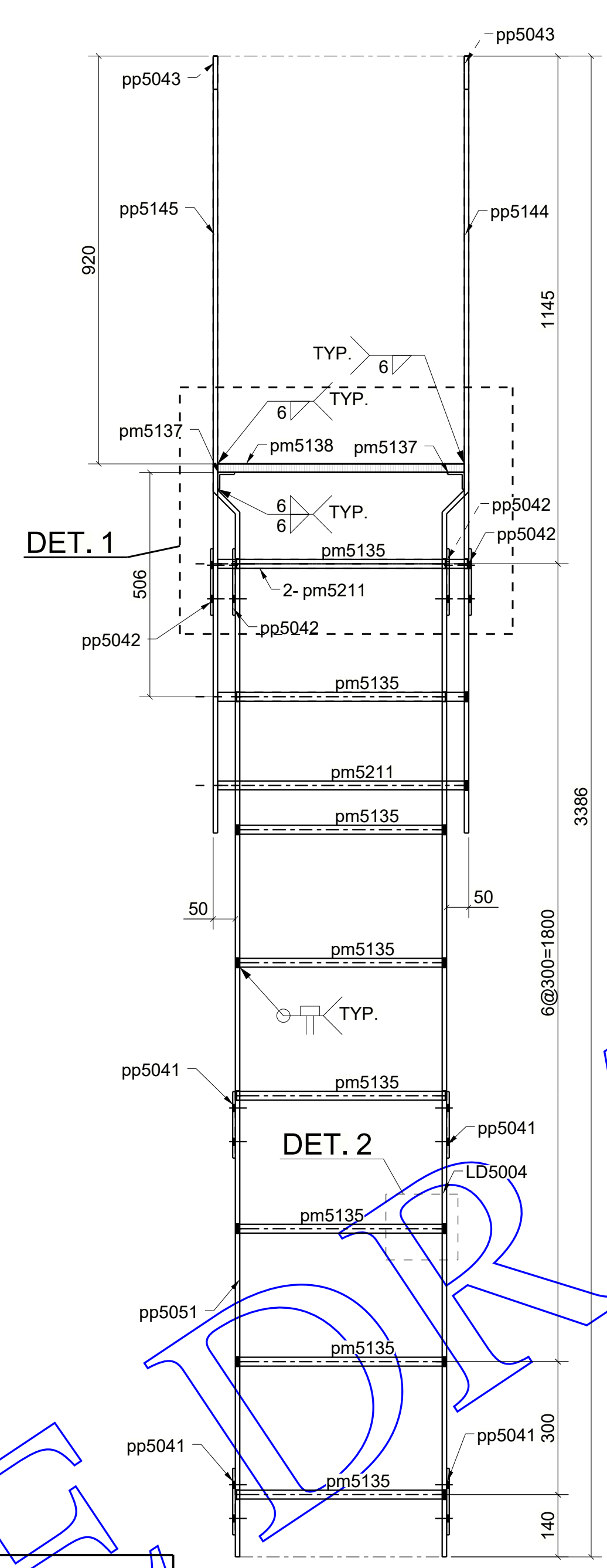
BILL OF MATERIAL

MARK	QTY	DESCRIPTION	LENGTH	WEIGHT	REMARKS
LD5003	1	LADDER			
LD5003	1	PL10X75	4065.00	52	300W
pm5135	10	ROD20	471.00	23	300W
pm5137	2	L38X38X4.8	930.00	11	300W
pm5138	1	GRTG BOI	0.00	0	
pm5141	2	ROD20	564.00	6	300W
pp5039	1	PL10X75	4065.00	52	300W
pp5041	4	PL6X150	200.00	12	300W
pp5042	4	PL6X150	175.00	11	300W
pp5043	2	PL10X75	930.00	22	300W
pp5044	1	PL10X75	1474.00	19	300W
pp5146	1	PL10X75	1474.00	19	300W
TOTAL WEIGHT THIS DRAWING				227	

ASSEMBLY WEIGHT: 181lbs	ASSEMBLY AREA: 4.38m ²	ASSEMBLY VOLUME: 0.02m ³
----------------------------	--------------------------------------	--

NOTE #1: ARCHITECT, ENGINEER & G.C. PLEASE NOTE:
 IF NO COMMENTS APPEAR ON THIS DRAWING WHEN THE DRAWING IS ISSUED FOR APPROVAL / REVIEW, THEN ECOSSE WELDING WILL ASSUME THAT ITS INTERPRETATION OF ARCHITECTURAL AND STRUCTURAL DRAWINGS IS ACCEPTABLE BY ALL PARTIES, AND FABRICATION WILL PROCEED ACCORDINGLY.
REF:
 MATERIAL: CAN3-G40.20 & G40.21
 HOLES: 22mm Ø (U.N.O)
 WELDS: 6mm Fillet (U.N.O)
 SURF PREP: SSPC-SP2
 PRIMER NOTE: GALVANIZED
 PAINT NOTE:
 REMARKS:

PROJECT:		SHEET #:	
CUSTOMER:		DWG NUMBER:	
DETAIL: LADDER		REV:	
DRAWN BY:	CHECKED BY:	JOB NUMBER	LD5003
DATE:	PLOT DATE:	7000	0



BILL OF MATERIAL

MARK	QTY	DESCRIPTION	LENGTH	WEIGHT	REMARKS
LD5004	1	LADDER			
LD5004	1	PL10X75	3398.00	44	300W
pm5135	8	ROD20	471.00	18	300W
pm5137	2	L38X38X4.8	930.00	11	300W
pm5138	1	GRTG BOI	0.00	0	
pm5211	3	ROD20	564.00	8	300W
pp5041	4	PL6X150	200.00	12	300W
pp5042	4	PL6X150	175.00	11	300W
pp5043	2	PL10X75	930.00	22	300W
pp5051	1	PL10X75	3398.00	44	300W
pp5144	1	PL10X75	1753.00	22	300W
pp5145	1	PL10X75	1753.00	22	300W
TOTAL WEIGHT THIS DRAWING				215	

ONE - LADDER - LD5004

ASSEMBLY WEIGHT: 176lbs	ASSEMBLY AREA: 4.23m ²	ASSEMBLY VOLUME: 0.02m ³
----------------------------	--------------------------------------	--

NOTE #1: ARCHITECT, ENGINEER & G.C. PLEASE NOTE:
 IF NO COMMENTS APPEAR ON THIS DRAWING WHEN THE DRAWING IS ISSUED FOR APPROVAL / REVIEW, THEN ECOSSE WELDING WILL ASSUME THAT ITS INTERPRETATION OF ARCHITECTURAL AND STRUCTURAL DRAWINGS IS ACCEPTABLE BY ALL PARTIES, AND FABRICATION WILL PROCEED ACCORDINGLY.

REF:
 MATERIAL: CAN3-G40.20 & G40.21
 HOLES: 22mm Ø (U.N.O)
 WELDS: 6mm Fillet (U.N.O)
 SURF PREP: SSSP-SP2
 PRIMER NOTE: GALVANIZED
 PAINT NOTE:
 REMARKS:

PROJECT:			
CUSTOMER:			
DETAIL: LADDER		SHEET #:	
DRAWN BY:	CHECKED BY:	JOB NUMBER	DWG NUMBER:
DATE:	PLOT DATE:	7000	LD5004
			REV: 0

BILL OF MATERIAL

MARK	QTY	DESCRIPTION	LENGTH	WEIGHT	REMARKS
LD5005	1	LADDER			
LD5005	1	PL10X75	4234.00	55	300W
pm5135	11	ROD20	471.00	25	300W
pm5136	1	PL6X150	200.00	3	300W
pm5137	2	L38X38X4.8	930.00	11	300W
pm5138	1	GRTG	0.00	0	BOI
pm5141	2	ROD20	564.00	6	300W
pp5041	4	PL6X150	200.00	12	300W
pp5042	4	PL6X150	175.00	11	300W
pp5043	2	PL10X75	932.00	22	300W
pp5057	1	PL10X75	4234.00	55	300W
pp5077	1	PL10X75	1474.00	19	300W
pp5146	1	PL10X75	1474.00	19	300W
TOTAL WEIGHT THIS DRAWING				237	

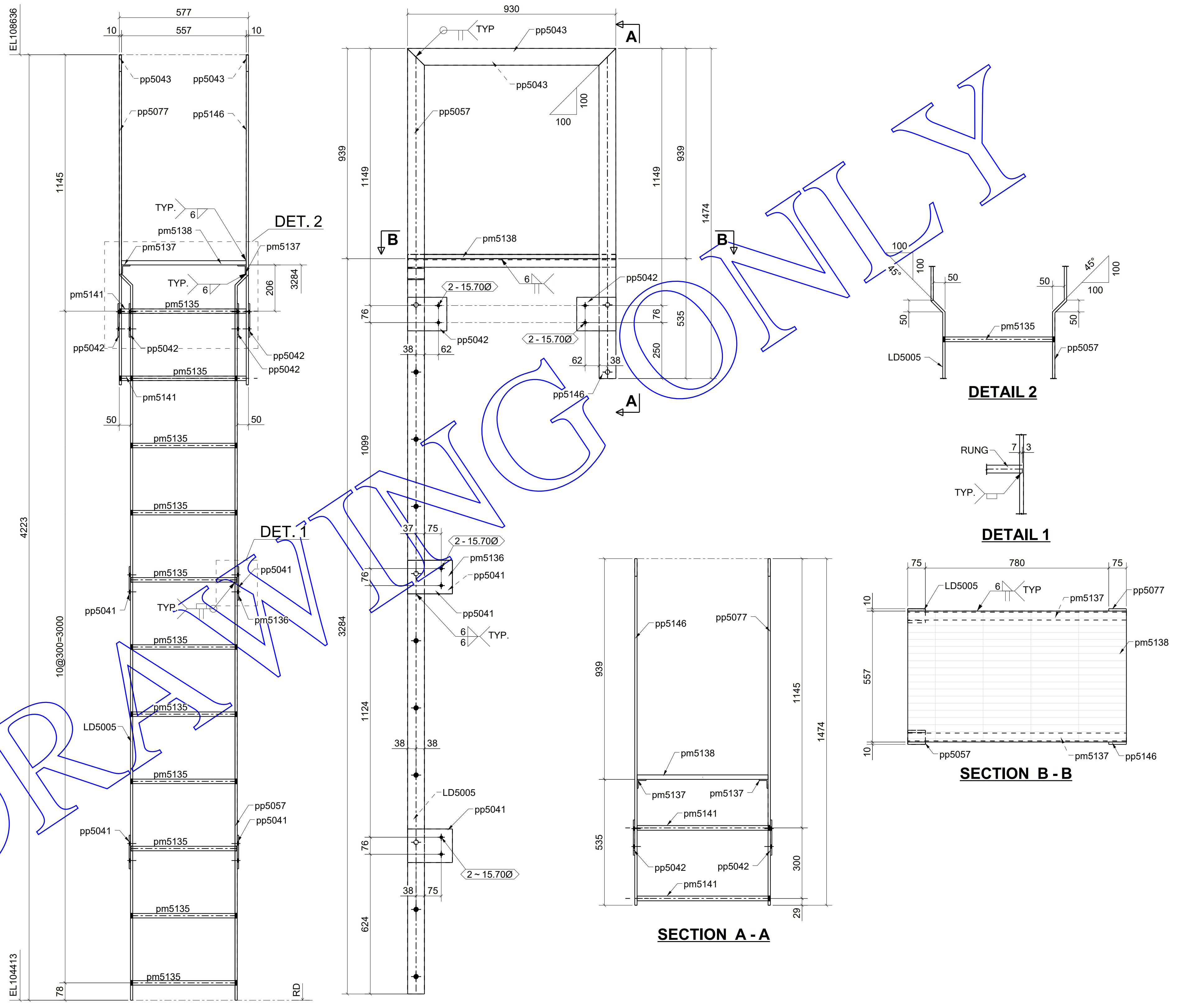
ONE - LADDER - LD5005

ASSEMBLY WEIGHT: 186lbs	ASSEMBLY AREA: 4.54m²	ASSEMBLY VOLUME: 0.02m³
-----------------------------------	--	--

NOTE #1: ARCHITECT, ENGINEER & G.C. PLEASE NOTE:
 IF NO COMMENTS APPEAR ON THIS DRAWING WHEN THE DRAWING IS ISSUED FOR APPROVAL / REVIEW, THEN ECOSSE WELDING WILL ASSUME THAT ITS INTERPRETATION OF ARCHITECTURAL AND STRUCTURAL DRAWINGS IS ACCEPTABLE BY ALL PARTIES, AND FABRICATION WILL PROCEED ACCORDINGLY.

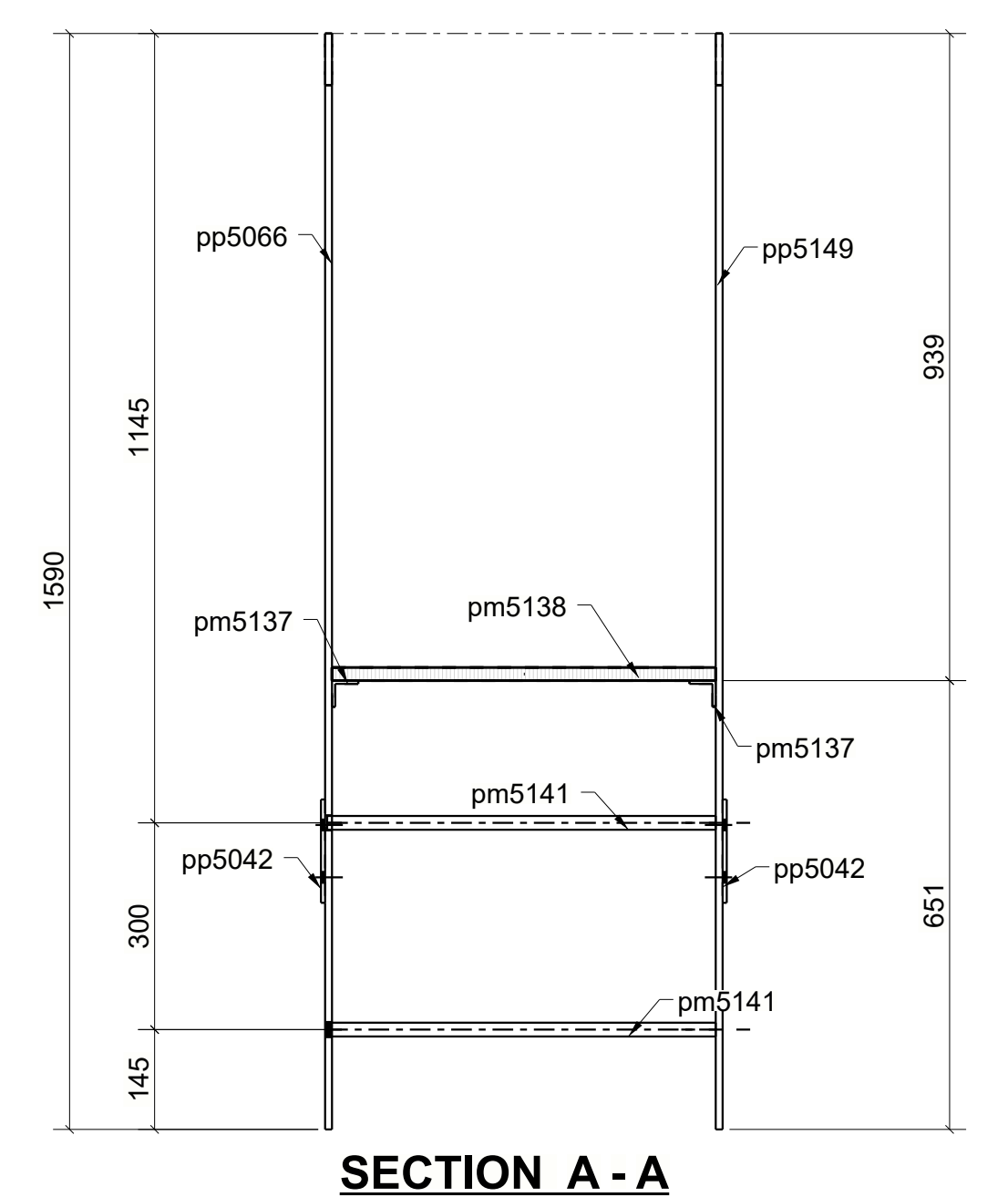
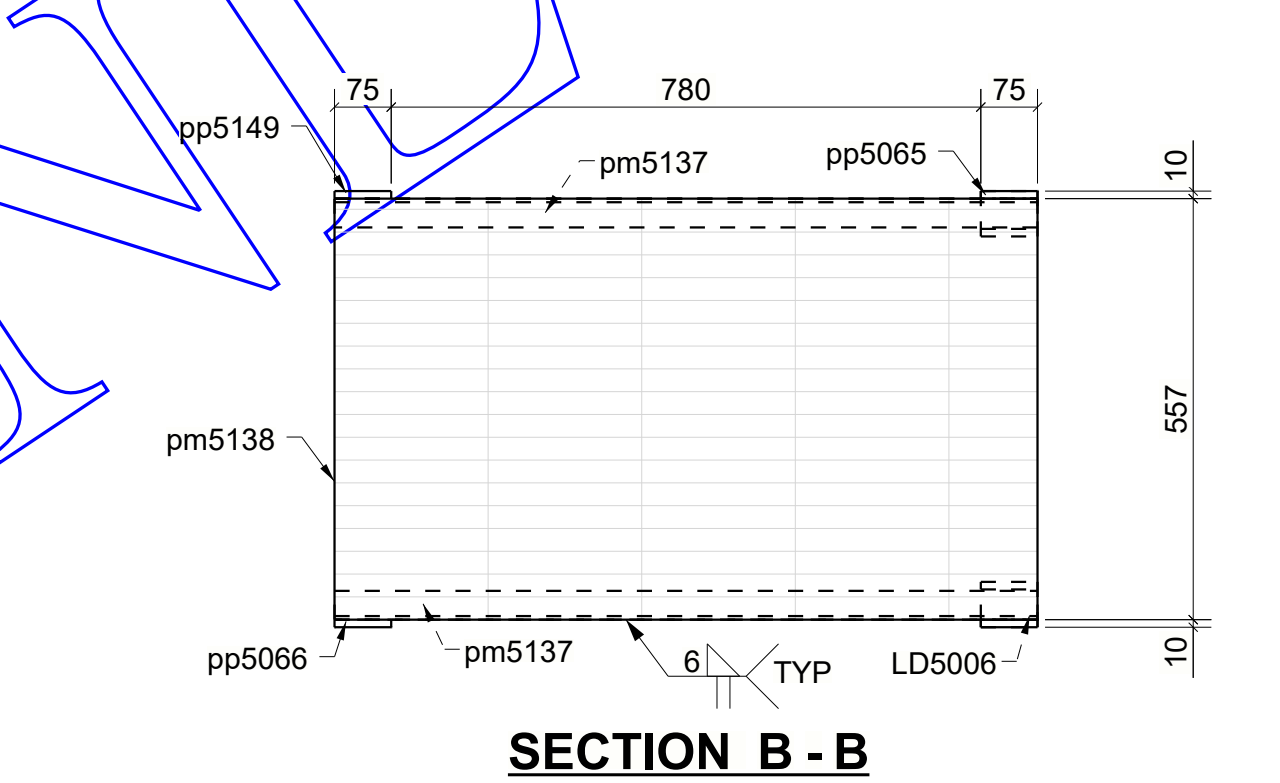
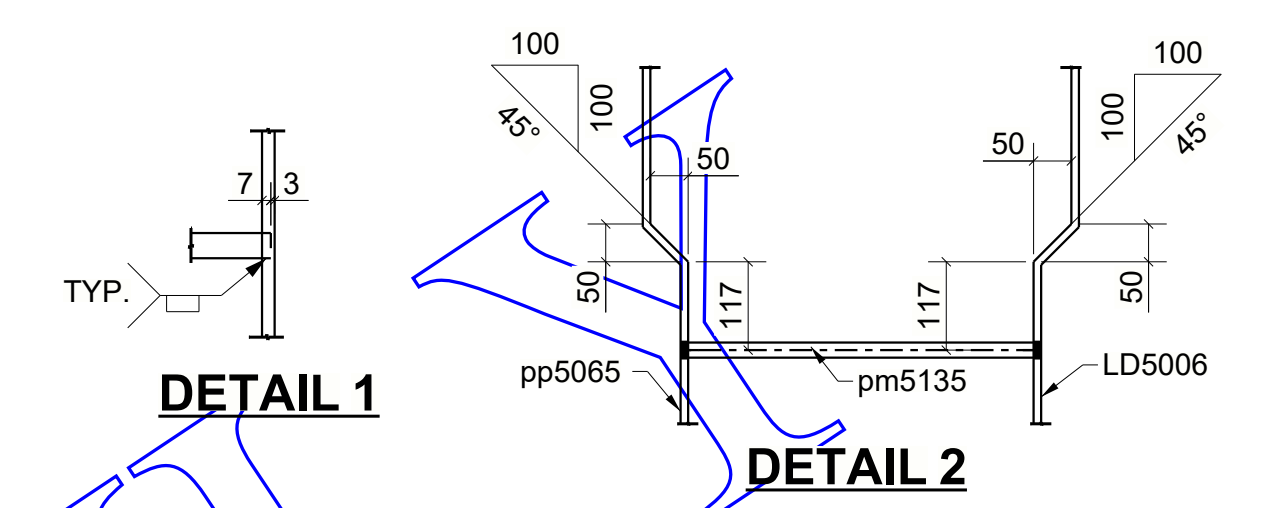
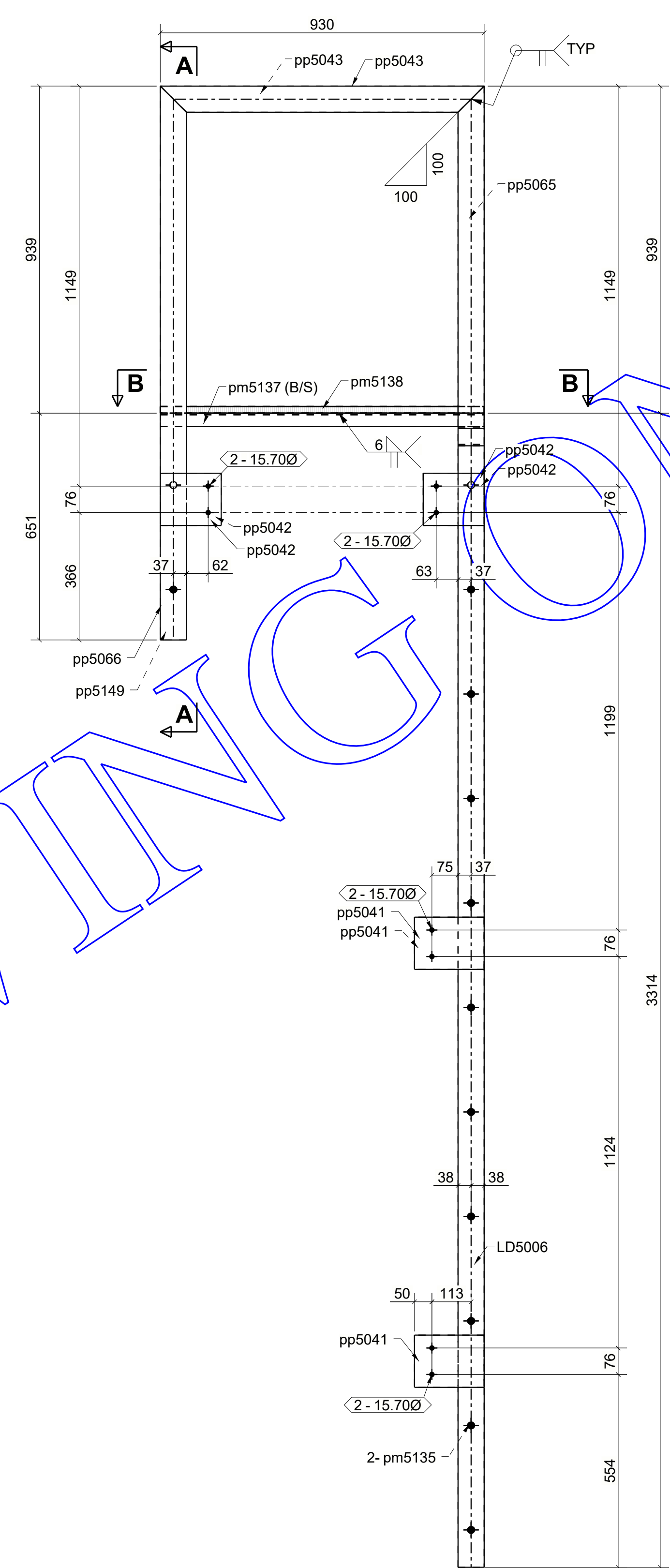
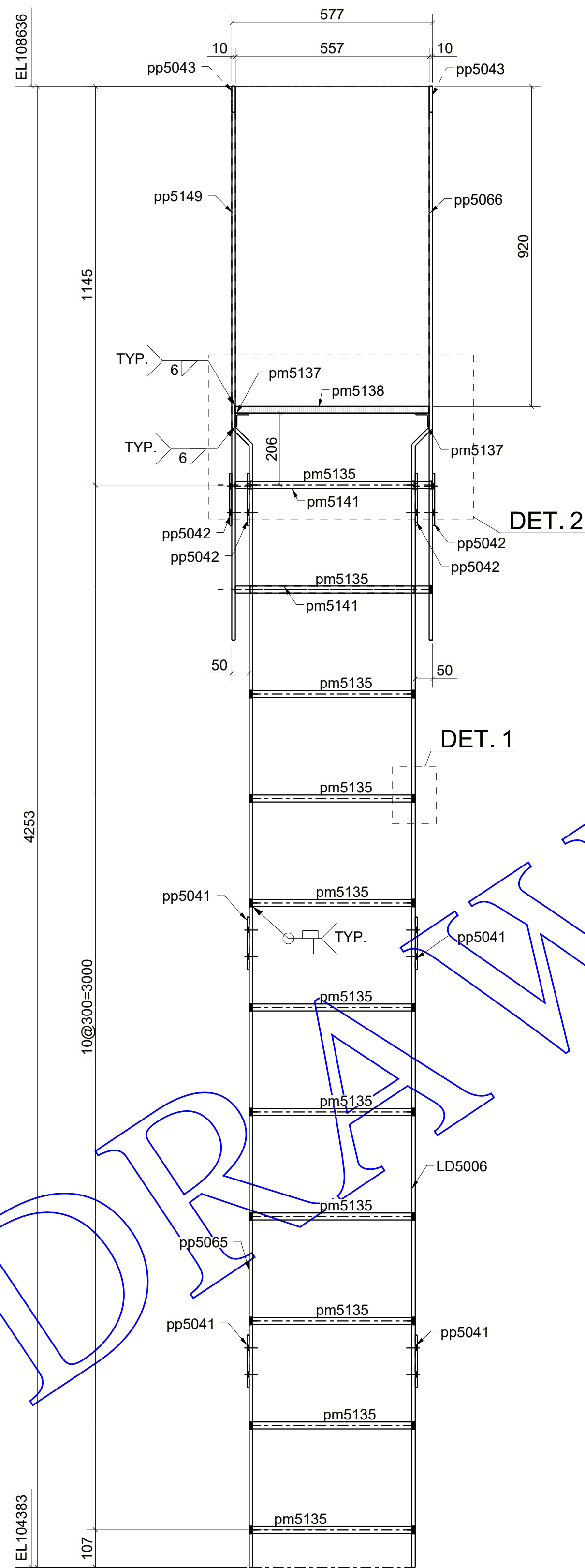
REF:
 MATERIAL: CAN3-G40.20 & G40.21
 HOLES: 22mm Ø (U.N.O)
 WELDS: 6mm Fillet (U.N.O)
 SURF PREP: SSPC-SP2
 PRIMER NOTE: GALVANIZED
 PAINT NOTE:
 REMARKS:

PROJECT:		SHEET #:	
CUSTOMER:		DWG NUMBER:	
DETAIL: LADDER		REV:	
DRAWN BY:	CHECKED BY:	JOB NUMBER	LD5005
DATE:	PLOT DATE:	7000	0



BILL OF MATERIAL

MARK	QTY	DESCRIPTION	LENGTH	WEIGHT	REMARKS
LD5006	1	LADDER			
LD5006	1	PL10X75	4265.00	55	300W
pm5135	11	ROD20	471.00	25	300W
pm5137	2	L38X38X4.8	930.00	11	300W
pm5138	1	GRTG	0.00	0	BOI
pm5141	2	ROD20	564.00	6	300W
pp5041	4	PL6X150	200.00	12	300W
pp5042	4	PL6X150	175.00	11	300W
pp5043	2	PL10X75	930.00	22	300W
pp5065	1	PL10X75	4265.00	55	300W
pp5066	1	PL10X75	1590.00	20	300W
pp5149	1	PL10X75	1590.00	20	300W
TOTAL WEIGHT THIS DRAWING				238	



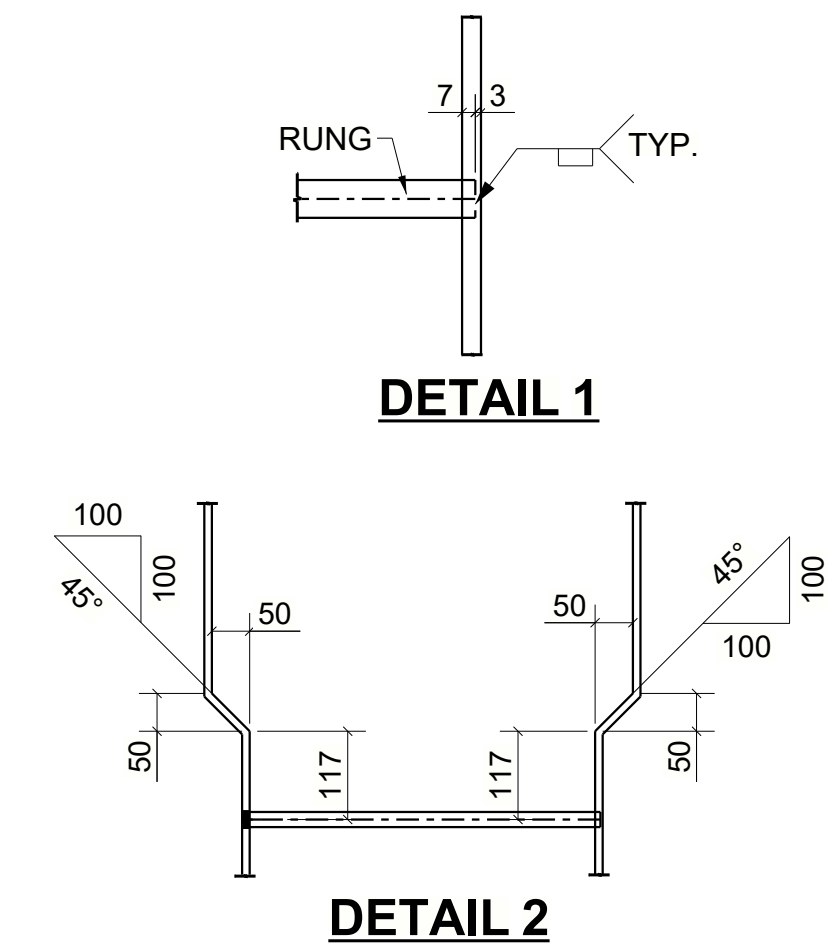
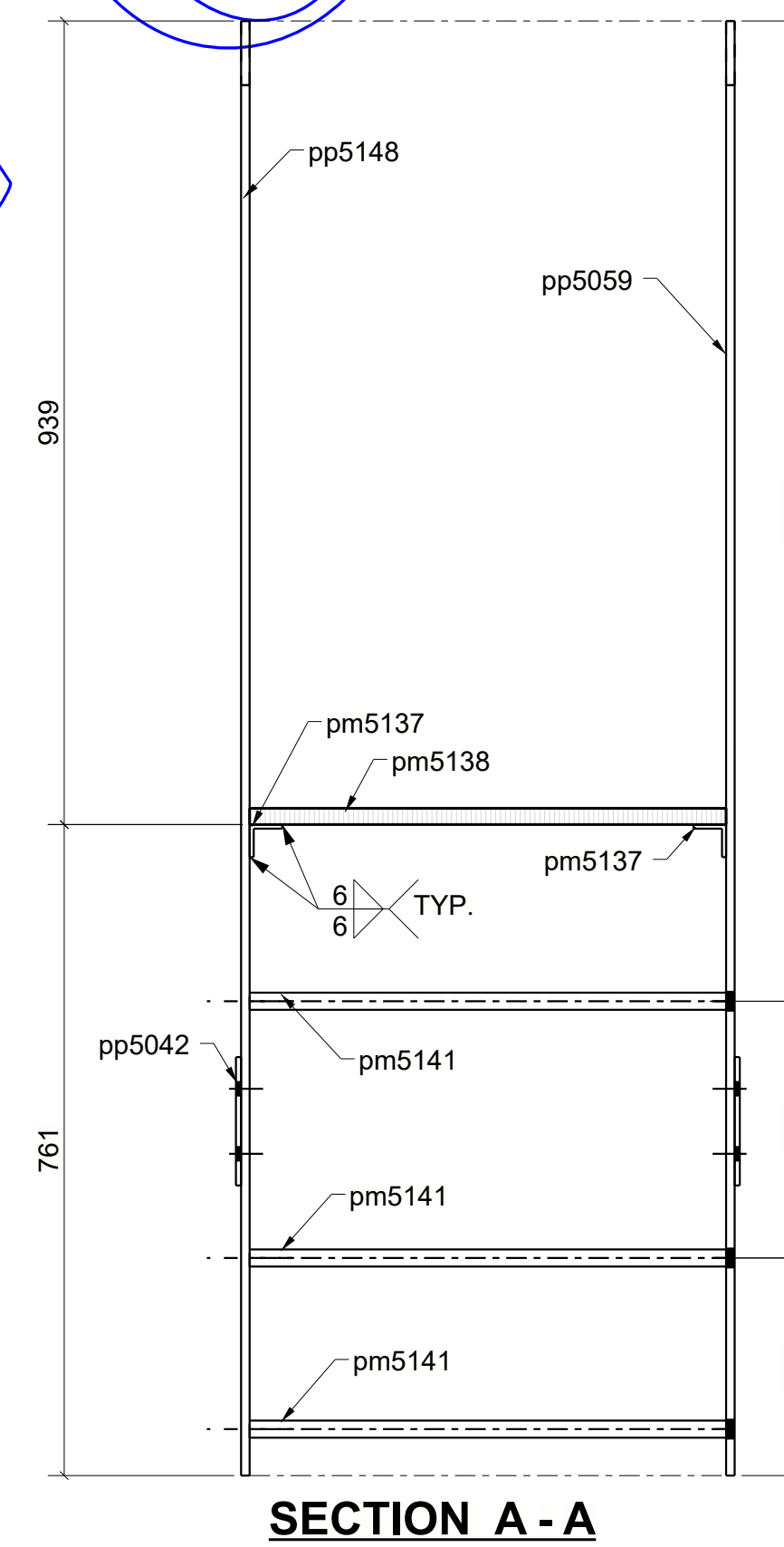
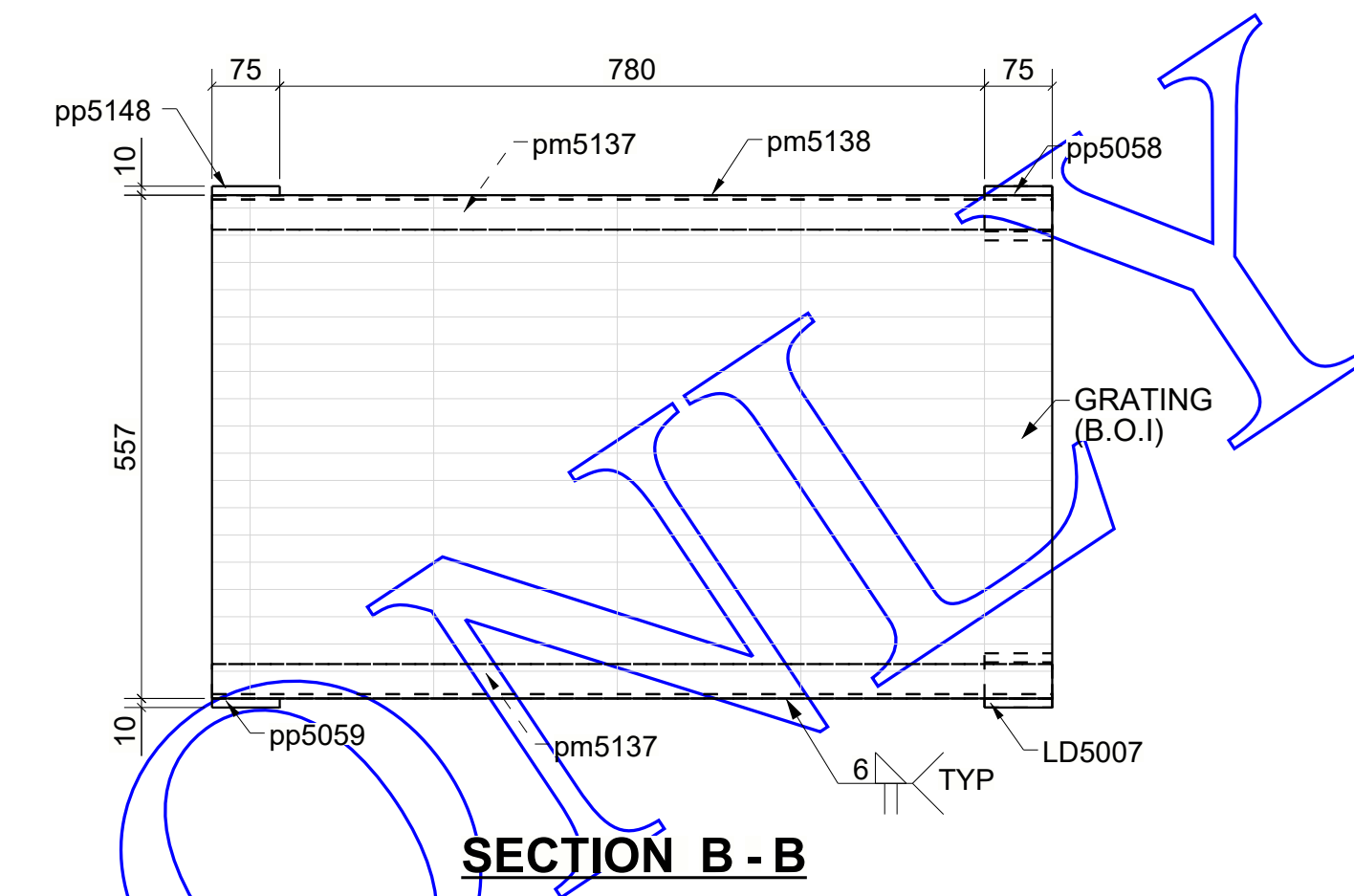
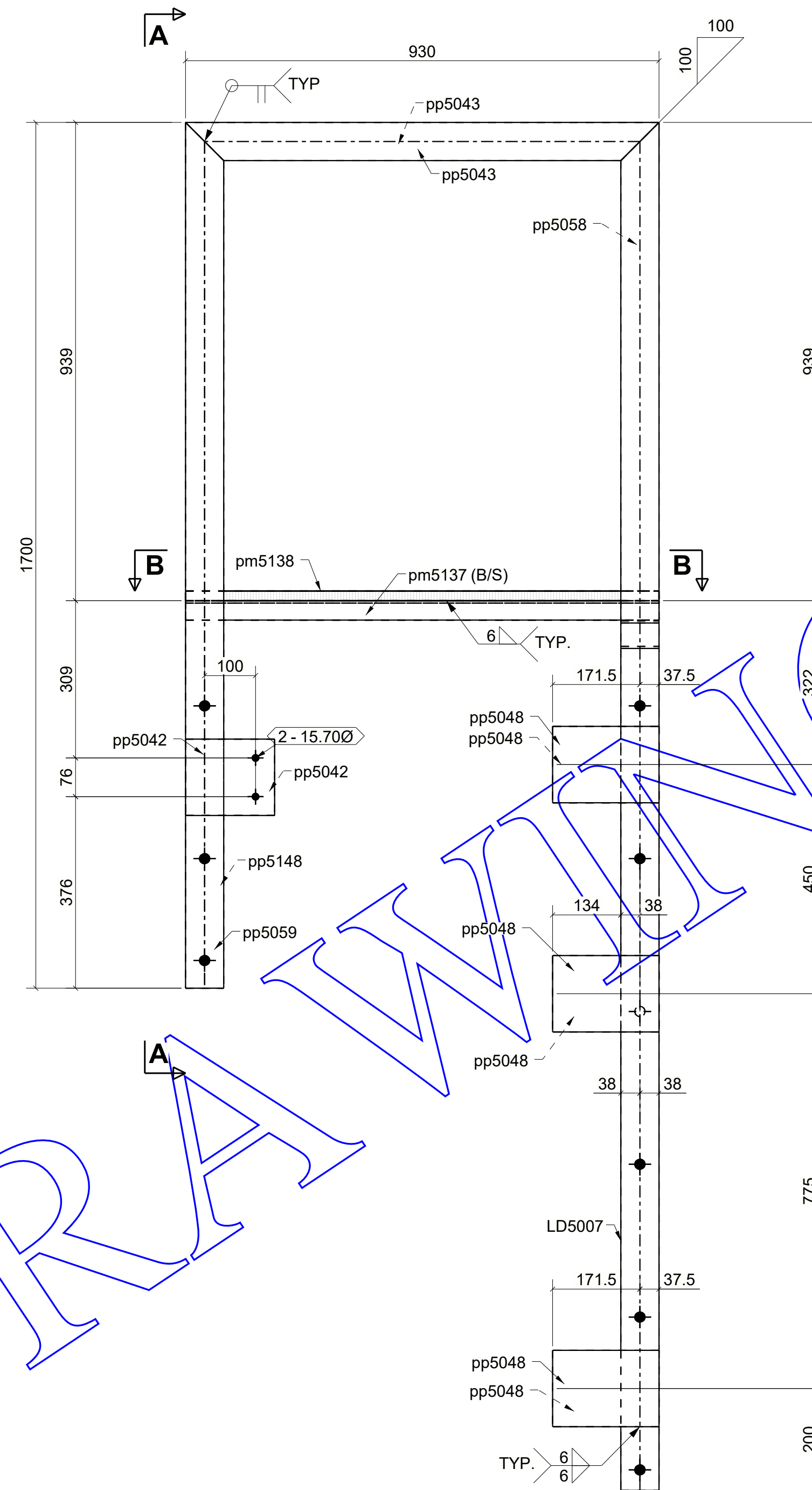
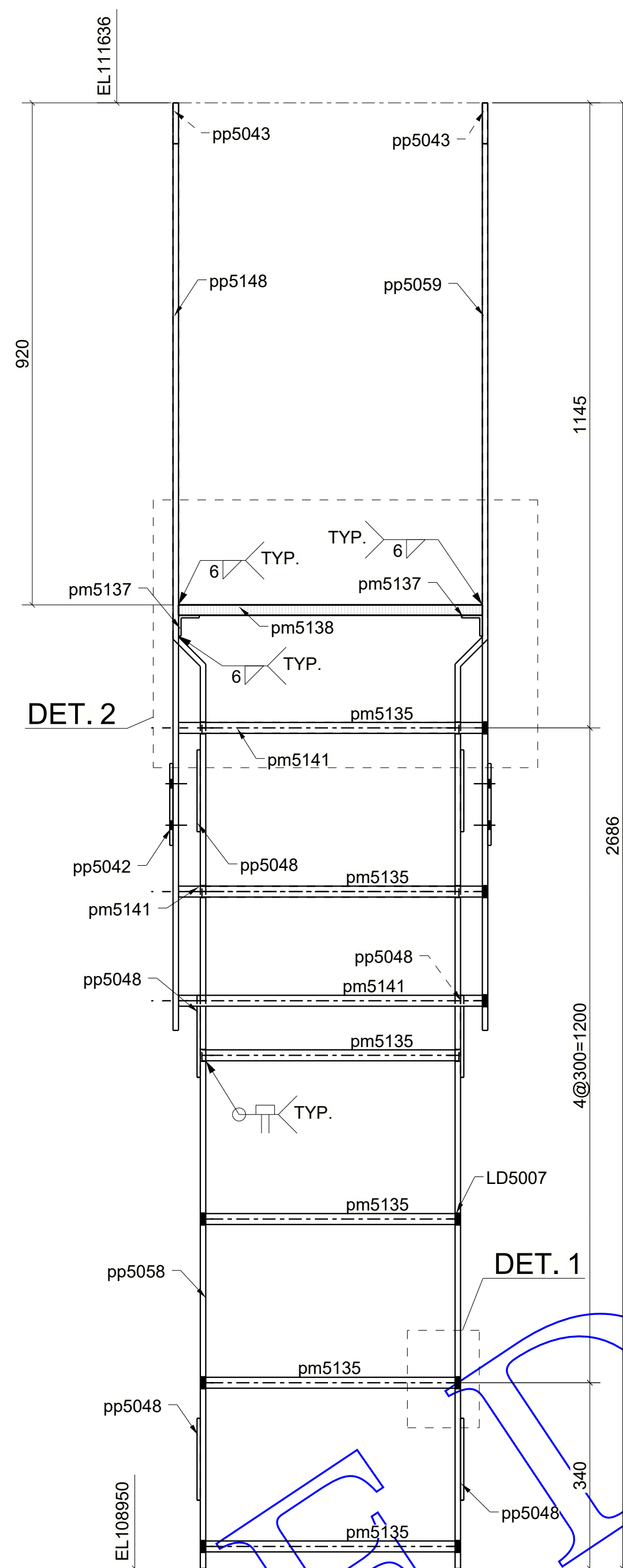
ONE - LADDER - LD5006

ASSEMBLY WEIGHT: 186lbs	ASSEMBLY AREA: 4.52m²	ASSEMBLY VOLUME: 0.02m³
-----------------------------------	--	--

NOTE #1: ARCHITECT, ENGINEER & G.C. PLEASE NOTE:
 IF NO COMMENTS APPEAR ON THIS DRAWING WHEN THE DRAWING IS ISSUED FOR APPROVAL / REVIEW, THEN ECOSSE WELDING WILL ASSUME THAT ITS INTERPRETATION OF ARCHITECTURAL AND STRUCTURAL DRAWINGS IS ACCEPTABLE BY ALL PARTIES, AND FABRICATION WILL PROCEED ACCORDINGLY.

REF:
 MATERIAL: CAN3-G40.20 & G40.21
 HOLES: 22mm Ø (U.N.O)
 WELDS: 6mm Fillet (U.N.O)
 SURF PREP: SSSPC-SP2
 PRIMER PREP: GALVANIZED
 PAINT NOTE:
 REMARKS:

PROJECT:		SHEET #:		REV: 0
CUSTOMER:		DWG NUMBER:		
DETAIL: LADDER		JOB NUMBER 7000	LD5006	
DRAWN BY:	CHECKED BY:	DATE:	PLOT DATE:	



BILL OF MATERIAL

MARK	QTY	DESCRIPTION	LENGTH	WEIGHT	REMARKS
LD5007	1	LADDER			
LD5007	1	PL10X75	2698.00	35	300W
pm5135	6	ROD20	471.00	14	300W
pm5137	2	L38X38X4.8	930.00	11	300W
pm5138	1	GRTG BOI	0.00	0	
pm5141	3	ROD20	564.00	8	300W
pp5042	2	PL6X150	175.00	5	300W
pp5043	2	PL10X75	930.00	22	300W
pp5048	6	PL6X150	209.00	20	300W
pp5058	1	PL10X75	2698.00	35	300W
pp5059	1	PL10X75	1700.00	22	300W
pp5148	1	PL10X75	1700.00	22	300W
TOTAL WEIGHT THIS DRAWING				193	

ONE - LADDER - LD5007

ASSEMBLY WEIGHT: 166lbs	ASSEMBLY AREA: 3.95m ²	ASSEMBLY VOLUME: 0.02m ³
----------------------------	--------------------------------------	--

NOTE #1: ARCHITECT, ENGINEER & G.C. PLEASE NOTE:
 IF NO COMMENTS APPEAR ON THIS DRAWING WHEN THE DRAWING IS ISSUED FOR APPROVAL / REVIEW, THEN ECOSSE WELDING WILL ASSUME THAT ITS INTERPRETATION OF ARCHITECTURAL AND STRUCTURAL DRAWINGS IS ACCEPTABLE BY ALL PARTIES, AND FABRICATION WILL PROCEED ACCORDINGLY.

REF:
 MATERIAL: CAN3-G40.20 & G40.21
 HOLES: 22mm Ø (U.N.O)
 WELDS: 6mm Fillet (U.N.O)
 SURF PREP: SSSPC-SP2
 PRIMER NOTE: GALVANIZED
 PAINT NOTE:
 REMARKS:

PROJECT:		SHEET #:	
CUSTOMER:		DWG NUMBER:	
DETAIL: LADDER		REV:	
DRAWN BY:	CHECKED BY:	JOB NUMBER	LD5007
DATE:	PLOT DATE:	7000	0

